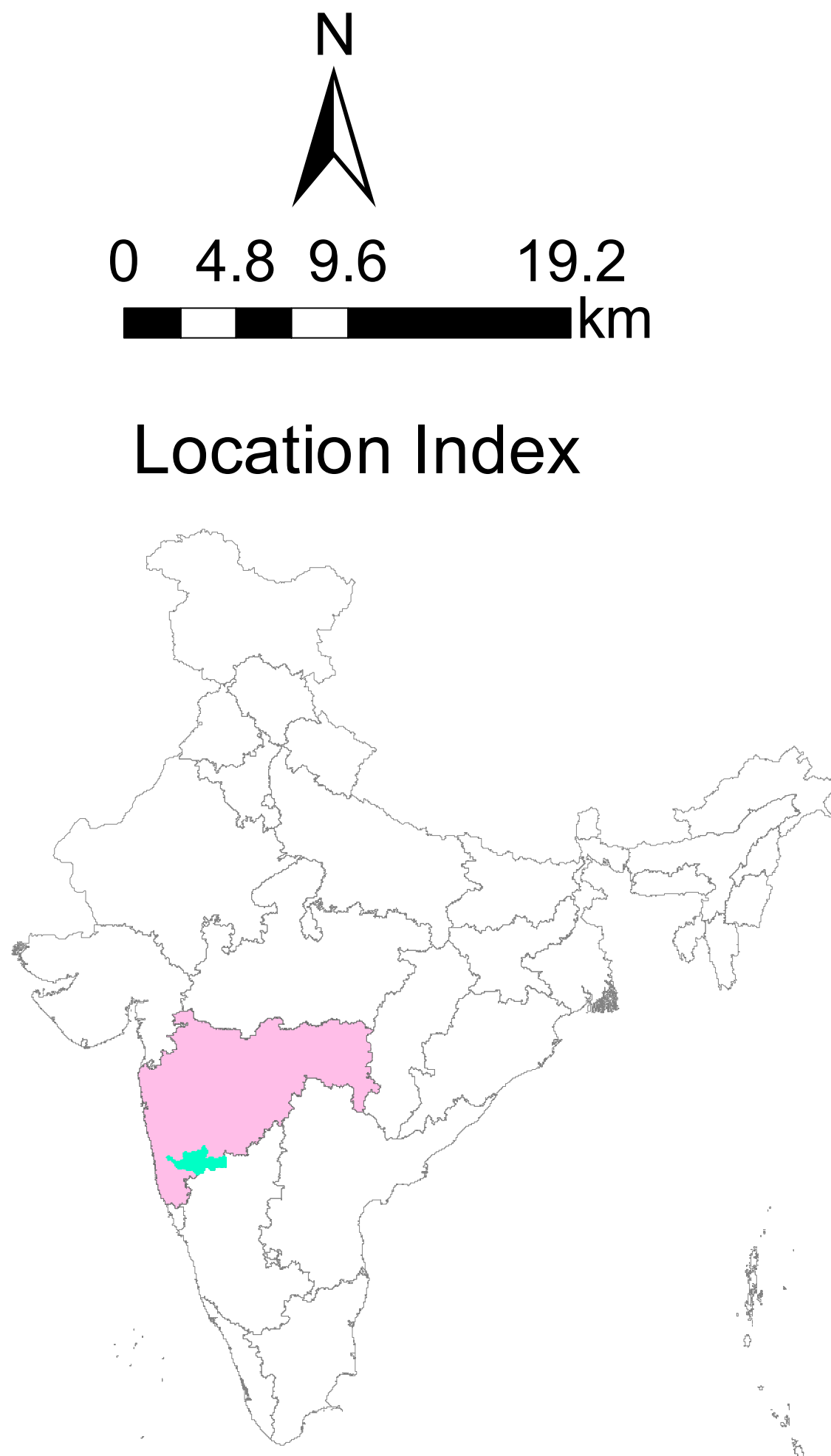
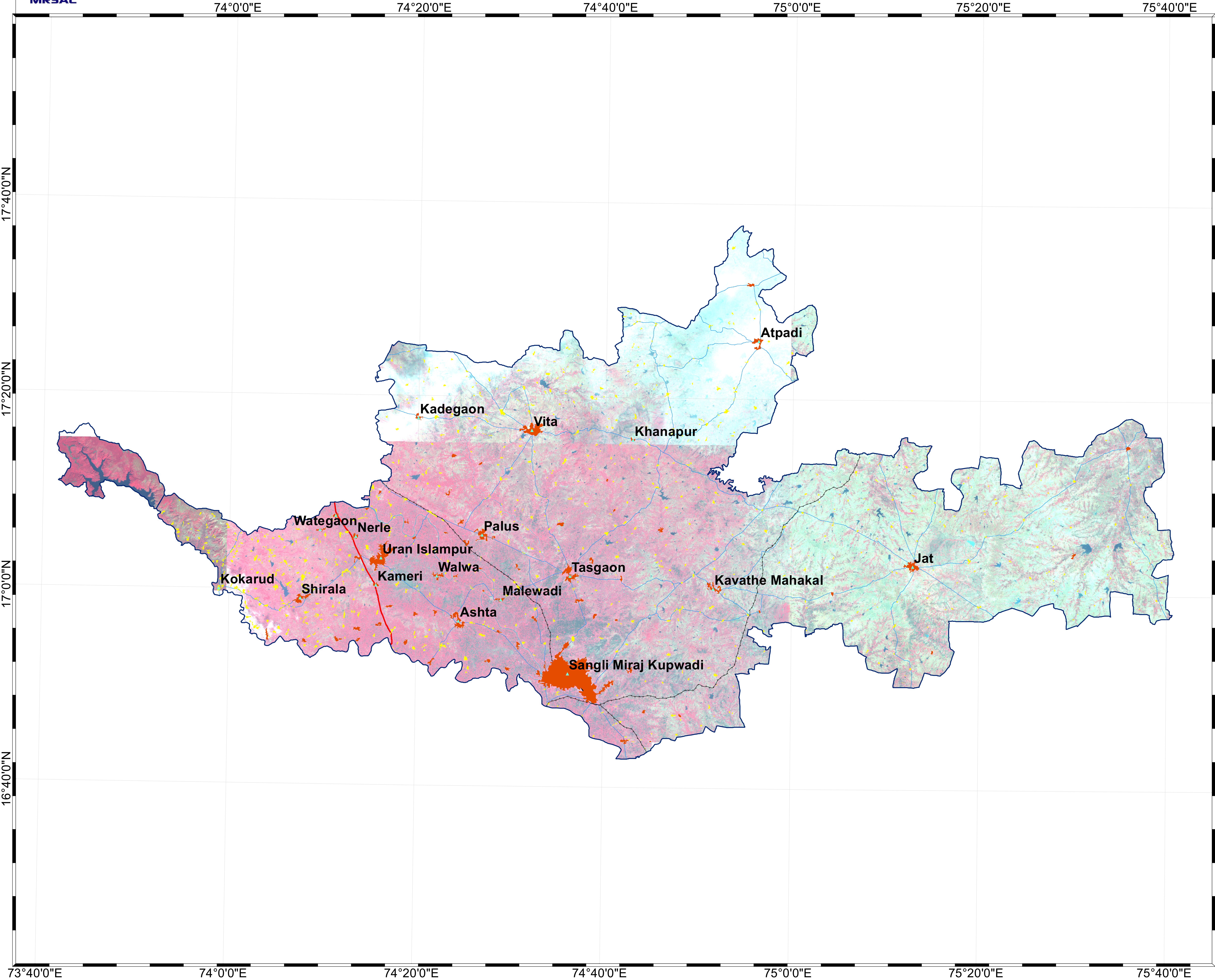
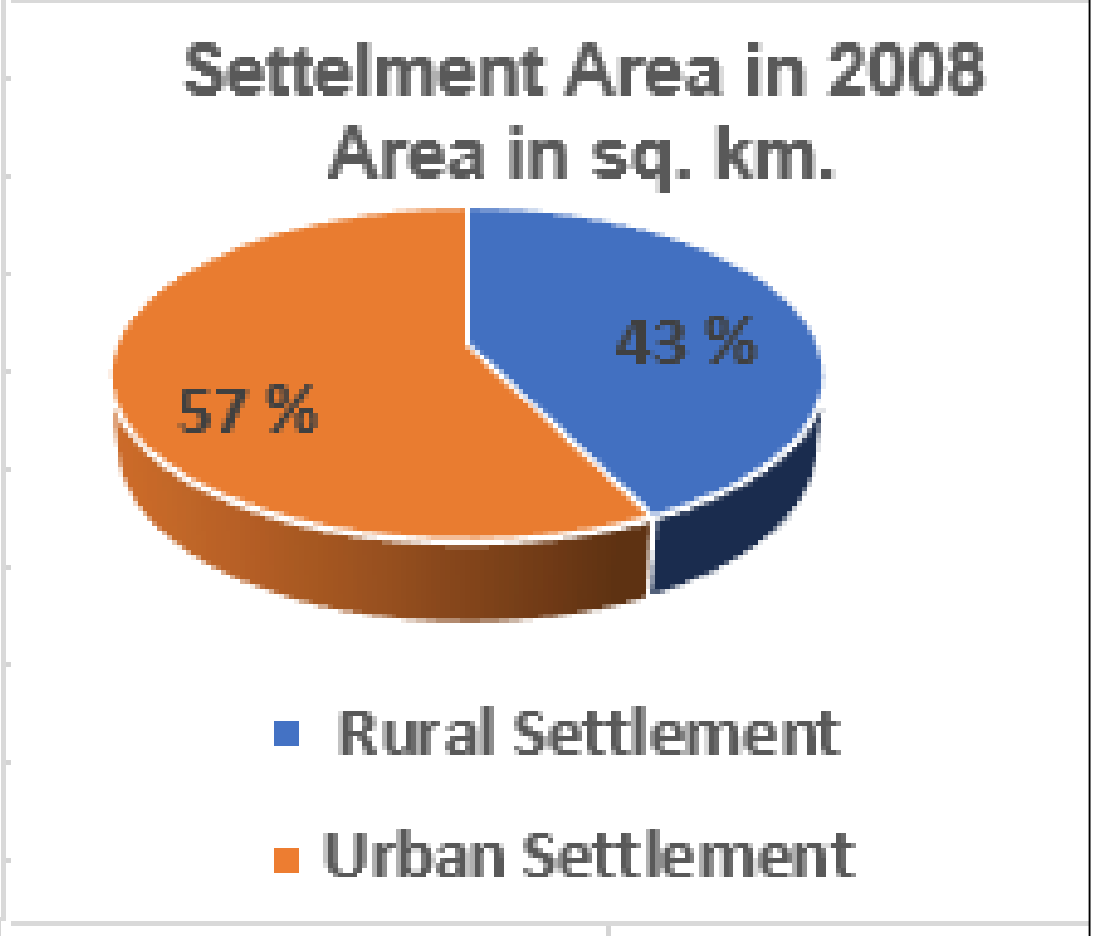




SPRAWL SETTLEMENT IN 2008 OF SANGLI DISTRICT, MAHARASHTRA



| Settelment Area in 2008 | |
|-------------------------|-----------------|
| Settlement Class | Area in sq. km. |
| Rural Settlement | 84.004 |
| Urban Settlement | 112.721 |



Legend

Settelment Class

- Rural Setteltment
- Urban Setteltment

Transportation

- National Highway
- State Highway
- Railway
- Sangli District Boundary
- Taluka Village

Image 20 Oct. 2008